

# MEMORIES ARE WORTH FIGHTING FOR!

We believe in the preservation of one's health in body and mind, and are dedicated to the detection and treatment of Alzheimer's.

## WHAT IS ALZHEIMER'S DISEASE?



Alzheimer's is the most common cause of dementia, a general term for loss of memory, behavioural & social skills that disrupt a person's ability to function in daily life.



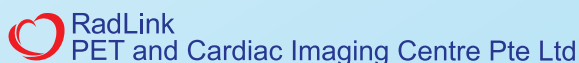
Alzheimer's disease accounts for 60 percent to 80 percent of dementia cases.<sup>1</sup>



This progressive brain disease usually occurs in older people, with symptoms typically appearing after the age of 60. However, early onset Alzheimer's may develop in a small group of patients between the ages of 30 to 60.<sup>1</sup>

Researchers believe there is not a single cause of Alzheimer's disease. The disease likely develops from multiple factors, such as genetics, lifestyle and environment. Scientists have identified factors that increase the risk of Alzheimer's. While some risk factors — age, family history and heredity — can't be changed, emerging evidence suggests there may be other factors we can influence.<sup>2</sup>

Brought to you by:



Supported by:



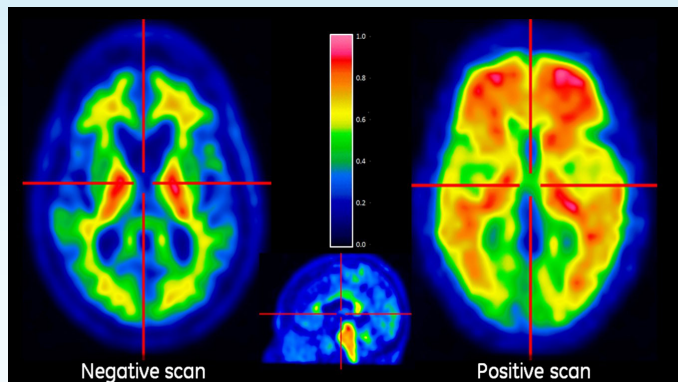
<sup>1</sup> Alzheimer's Association®, "What Is Alzheimer's?" 2019, [www.alz.org/alzheimers-dementia/what-is-alzheimers](http://www.alz.org/alzheimers-dementia/what-is-alzheimers).

<sup>2</sup> Alzheimer's Association®, "What Is Alzheimer's? - Causes and Risk Factors" 2019, [www.alz.org/alzheimers-dementia/what-is-alzheimers](http://www.alz.org/alzheimers-dementia/what-is-alzheimers).

# BREAKTHROUGHS IN IMAGING AND DIAGNOSTICS TECHNOLOGY NOW MAKE IT POSSIBLE FOR EARLY DETECTION OF ALZHEIMER'S DISEASE.

Since 2017, RadLink has offered Alzheimer's disease assessment with **Vizamyl™**, an amyloid PET scanning for patients with memory complaints. Amyloid PET scanning makes amyloid plaques "light up" on a brain PET scan, enabling an accurate detection of plaques in living people for the first time <sup>3</sup>.

Breakthrough procedures such as the **Vizamyl™**, amyloid positron-emission tomography (PET) scan, enable early detection of amyloid in patients suspected of pre-dementia, providing a more precise understanding of the changes going on in their brains. The amyloid PET scan works by injecting the patient with a radiopharmaceutical tracer. The tracer then binds to the beta-amyloid plaques in the brain, which appear brightly on a scan.



*\*Amyloid deposits show up bright red on the PET scans, allowing doctors to confirm if a patient has pre-dementia, also known as mild cognitive impairment (MCI).*

Diagnosing Alzheimer's is complex. **Vizamyl™**, Amyloid PET imaging represents a potential major advance in the assessment of those with cognitive impairment. The scan visualizes plaques present in the brain, which are prime suspects in damaging and killing nerve cells in Alzheimer's. Before amyloid PET, these plaques could only be detected by examining the brain at autopsy <sup>3</sup>.

<sup>3</sup> UCSF Department of Radiology & Biomedical Imaging, "Amyloid PET Scan for Alzheimer's Disease Assessment." 2019, <https://radiology.ucsf.edu/patient-care/services/specialty-imaging/alzheimer>

## CONCERNED ABOUT YOUR CHANCES OF GETTING ALZHEIMER'S?

+65 6836 1318  
+65 8786 1677  
[enquiry@radlink.com.sg](mailto:enquiry@radlink.com.sg)

## VIZAMYL SCAN IS AVAILABLE AT:

**RadLink PET and Cardiac Imaging Centre**  
290 Orchard Road, #08-05/06  
Paragon Medical, Singapore 238859

## WHAT IF I TEST POSITIVE?

If tests are found positive at a younger age, it may create the impression that the disease has progressed quicker. However, early onset Alzheimer's disease progresses over the course of several years in younger people as it does in adults over the age of 65.

But it's important to plan ahead after receiving a diagnosis. Early detection of Alzheimer's can impact your financial and legacy plans.

### Examples of some steps that can help include:



Seeking out a support group for those with Alzheimer's



Leaning on friends and family for support



Discussing your role, and possible assistance with your employer



Going over health insurance to ensure certain medications and treatments are covered



Having disability insurance papers in order before the symptoms appear



Engaging in financial planning for the future if one's health changes suddenly

Don't be afraid to seek help from others during these steps. Getting personal affairs in order can provide peace of mind as you navigate your next steps.